

# Écrous à sertir en aveugle SSM

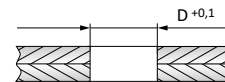
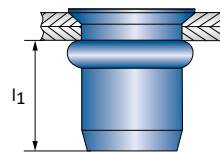
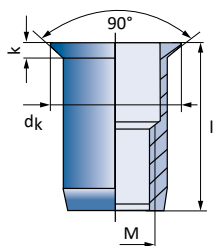
acier galvanisé

tête fraisée | cylindrique lisse | ouvert



DONNÉES  
**CAO**  
EN LIGNE

Série  
**853**



C4C [1.0303]

M	$\frac{k}{dk}$	l	N°	
<b>M4</b>	1,5 - 3,5	11,5	10.853.040.350	500
	3,0 - 5,0	13,0	10.853.040.500	500
<b>D 6,0</b>	<b>k 1,5</b>	<b>dk 8,3</b>	<b>l<sub>1</sub> max. 8,0</b>	$\curvearrowright$ 4,0 Nm $\updownarrow$ 5200 N
<b>M5</b>	1,5 - 4,0	13,0	10.853.050.400	500
	4,0 - 5,5	14,5	10.853.050.550	500
<b>D 7,0</b>	<b>k 1,5</b>	<b>dk 9,3</b>	<b>l<sub>1</sub> max. 9,0</b>	$\curvearrowright$ 6,0 Nm $\updownarrow$ 9500 N
<b>M6</b>	1,5 - 4,5	16,0	10.853.060.450	500
	4,5 - 6,0	17,5	10.853.060.600	500
<b>D 9,0</b>	<b>k 1,5</b>	<b>dk 11,3</b>	<b>l<sub>1</sub> max. 11,0</b>	$\curvearrowright$ 11,0 Nm $\updownarrow$ 16500 N

M	$\frac{k}{dk}$	l	N°	
<b>M8</b>	1,5 - 4,5	18,5	10.853.080.450	250
	4,5 - 6,0	20,0	10.853.080.600	250
<b>D 11,0</b>	<b>k 1,5</b>	<b>dk 13,3</b>	<b>l<sub>1</sub> max. 13,5</b>	$\curvearrowright$ 24,0 Nm $\updownarrow$ 23500 N
<b>M10</b>	3,0 - 4,5	22,0	10.853.100.450	250
	4,5 - 6,0	23,5	10.853.100.600	250
	6,0 - 9,0	28,0	10.853.100.900	250
<b>D 13,0</b>	<b>k 1,5</b>	<b>dk 15,2</b>	<b>l<sub>1</sub> max. 16,5</b>	$\curvearrowright$ 50,0 Nm $\updownarrow$ 37000 N